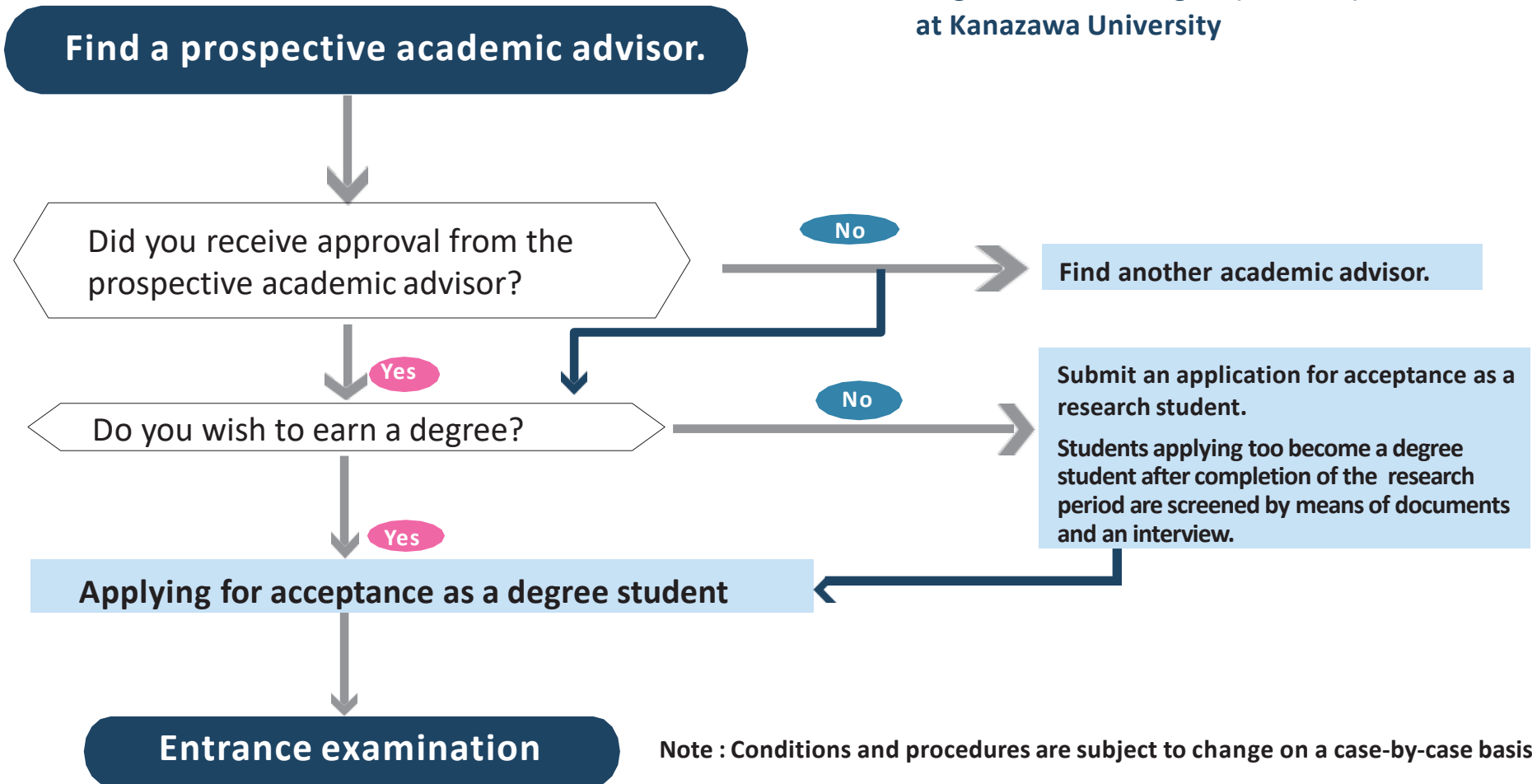


# General Flow Chart for Graduate Admission

Degree and Non-degree (research) Students  
at Kanazawa University



<https://www.kanazawa-u.ac.jp/education/admission/incontact>



# GRADUATE

## Human and Socio-Environment Studies

Humanities,  
Economics,  
Regional Development Studies,  
International Studies,  
Human and Socio-Environmental Studies  
(Doctoral Course Only)

Frontier Science Initiative  
Transdisciplinary Sciences  
Nano Life Sciences

## Law School

Legal and Politics  
Legal Affairs

## Professional Development in Teacher Education

Professional Development  
in Teacher Education

## Natural Science and Technology

Mathematical and Physical Sciences,  
Material Chemistry,  
Mechanical Science and Engineering,  
Electrical Engineering and Computer Science,  
Environmental Design,  
Natural System

## Medical Sciences

Medical Science(Masters Course Only)  
Medicine(Doctoral Course Only)  
Pharmacy(Doctoral Course Only)  
Pharmaceutical Sciences  
Health Sciences

## Advanced Preventive Medical Sciences

Advanced Preventive Medical Sciences (Doctoral  
Course Only)

# UNDERGRADUATE

NEW

## Philosophy in Interdisciplinary Sciences

Future of Innovation in Society

## Science and Engineering

Mathematics and Physics,  
Chemistry,  
Mechanical Engineering,  
Frontier Engineering,  
Electrical, info. And Communication Engineering,  
Geosciences and Civil Engineering,  
Biological Science and Technology

## Human and Social Sciences

Humanities,  
Law,  
Economics,  
Teacher Education,  
Regional Development Studies,  
International Studies

## Medical, Pharmaceutical and Health Sciences

Medicine,  
Pharmacy,  
Medical and Pharmaceutical Sciences,  
Health Sciences

# Directory of Researchers

You can find your prospective academic advisor at the following website.

[http://ridb.kanazawa-u.ac.jp/public/index\\_en.php](http://ridb.kanazawa-u.ac.jp/public/index_en.php)

● Human and Social Sciences

<http://kuglobal.w3.kanazawa-u.ac.jp/wp/wp-content/uploads/List-of-study-field.pdf>

● Natural Science & Technology

[https://www.nst.kanazawa-u.ac.jp/labp/index\\_E.html](https://www.nst.kanazawa-u.ac.jp/labp/index_E.html)

● Medical

<http://www.med.kanazawa-u.ac.jp/EN/lab/>

● Pharmaceutical

<http://www.p.kanazawa-u.ac.jp/research/> (only in Japanese)

● Health Sciences

<http://mhs3.mp.kanazawa-u.ac.jp/eng/staff/kango.html>

<http://mhs3.mp.kanazawa-u.ac.jp/eng/staff/iryo.html>

<http://mhs3.mp.kanazawa-u.ac.jp/eng/staff/rihabiri.html>

# Scholarship

## Application required prior to enrollment

### Japanese Government (MEXT) Scholarship

- Visit the website of Embassy of Japan in your country for the details or directly ask the Embassy.
- Merit basis.

## Application after enrollment

Kanazawa University will support students to apply for scholarship after enrollment.

### JASSO Honors Scholarship (Gakushu-Shoreihi)

- Japan Student Services Organization (JASSO) offers the scholarship, Gakushu-Shoreihi, to international students with good academic standings.

### Private Foundations Scholarship

- Scholarships available to KU international students offered by approximately 30 private foundations per year.
- Note that most of the scholarships require university's recommendation and some of them require Japanese language proficiency.
- The application requirements and monthly allowance vary depending on the foundation.

### Kanazawa University Scholarship

- Submit to the Division in charge through a prospective academic adviser at KU.
- Those who are graduate students at partner universities and will be degree-seeking graduate students at KU.

Reference: <http://www.adm.kanazawa-u.ac.jp/ie/e/abroad/scholarship.html>  
[https://www.jasso.go.jp/en/study\\_j/scholarships/index.html](https://www.jasso.go.jp/en/study_j/scholarships/index.html)  
<https://www.jpss.jp/en/scholarship/>